

# CARLOS ANTONIO / gallery

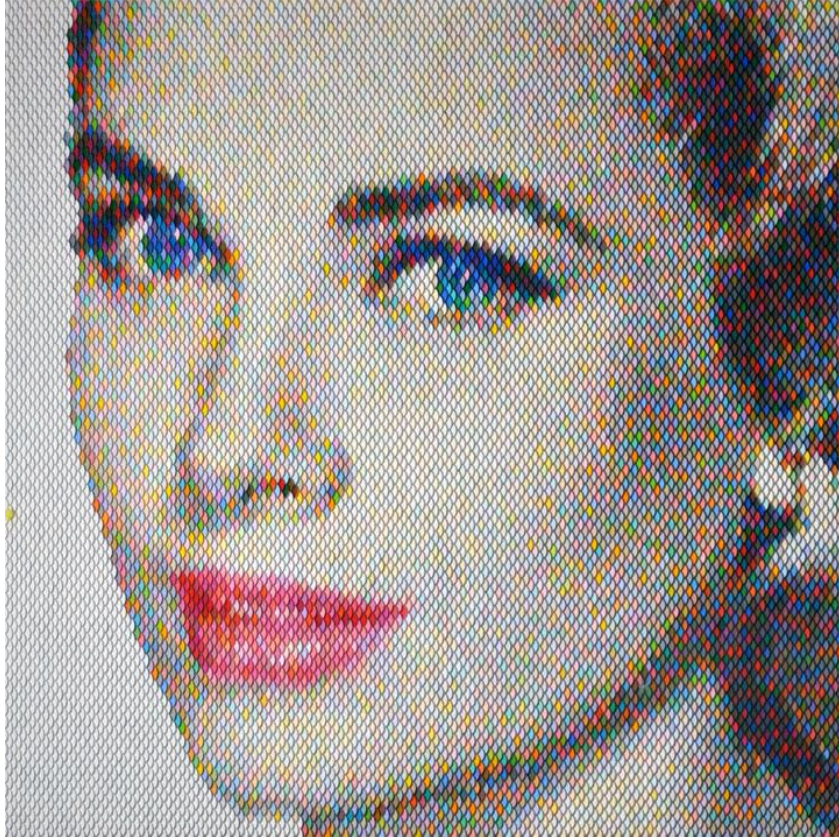
## Acquisition Inquiries

[carlos@carlos-antonio.com](mailto:carlos@carlos-antonio.com)

# PETER COMBE

Peter Combe is consumed by the subtle magic that occurs when playing with light, color, and movement in his art-making. Whether punched or shredded, he appropriates household paint swatches and make mostly 3-dimensional artworks. These artworks transform and change subtly as the viewer shifts from his/her vantage point. There is a magic that occurs, a trick of the eye where color seems to occupy space - a void - at once ethereal, yet seen from another angle the whole appears as if a ghostly image, veiled in gossamer.

[carlos-antonio.com](http://carlos-antonio.com)



*Grace (AoP)*

48x48"  
Mixed media  
2019  
\$21,500

[carlos@carlos-antonio.com](mailto:carlos@carlos-antonio.com)

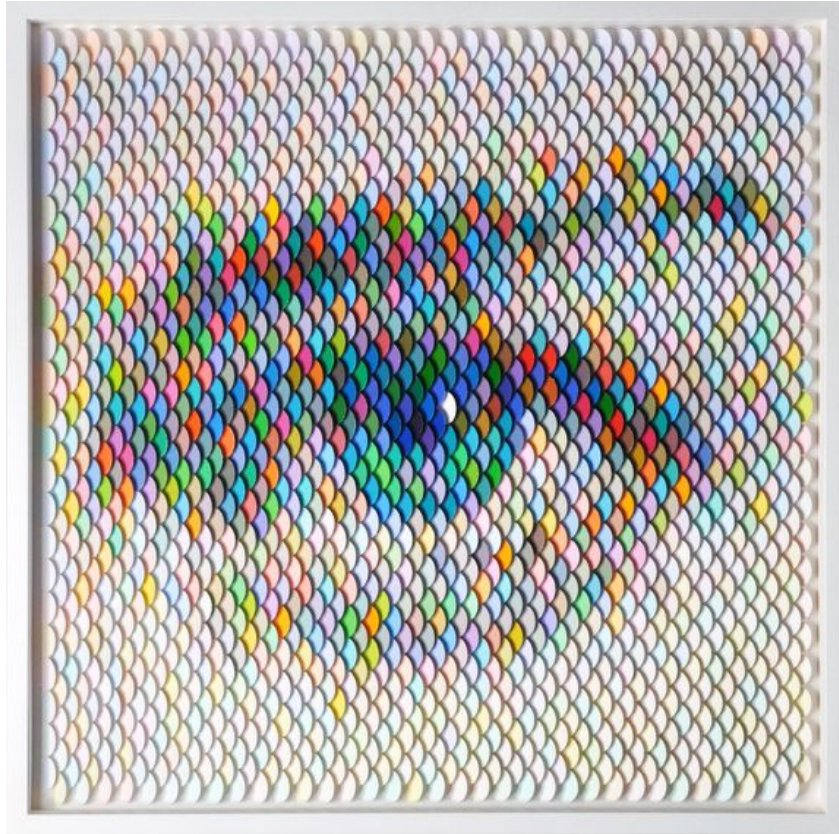


*(The) Rock*

48x60"  
Mixed media  
2016

\$26,500

[carlos@carlos-antonio.com](mailto:carlos@carlos-antonio.com)



*Julie (Eye)*

18x18"  
Mixed media  
2019

\$4,500

[carlos@carlos-antonio.com](mailto:carlos@carlos-antonio.com)



*Blue Dietrich*

18" x 18"  
Mixed media 2019

\$4,500

[carlos@carlos-antonio.com](mailto:carlos@carlos-antonio.com)

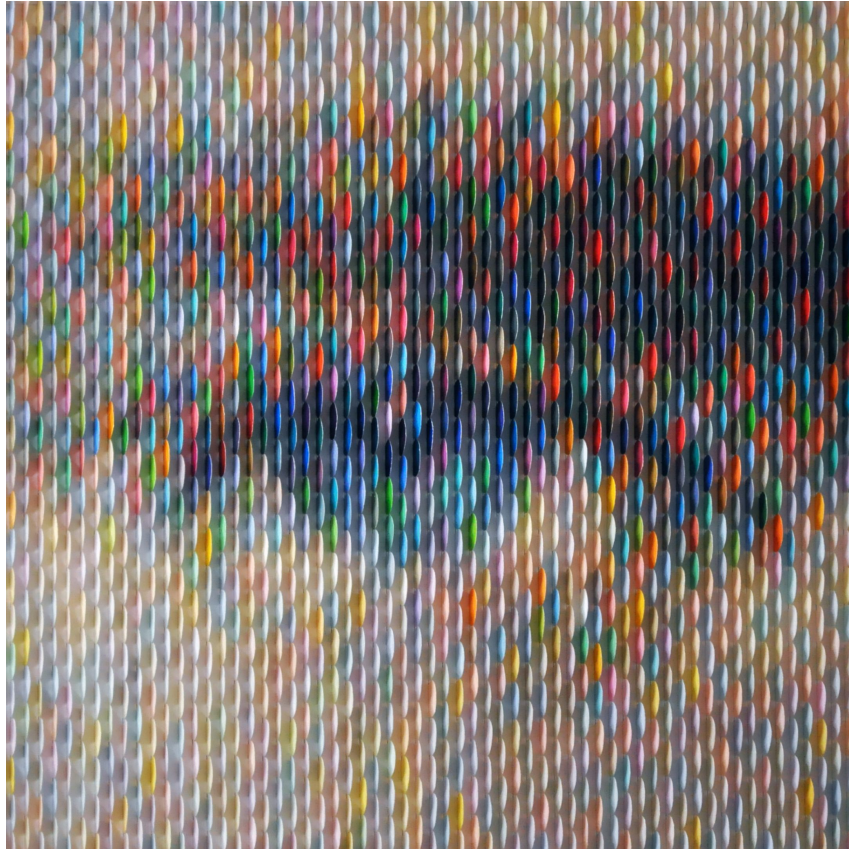


*Blue Bacchus*

42" x 42"  
Mixed media 2015

\$16,500

[carlos@carlos-antonio.com](mailto:carlos@carlos-antonio.com)



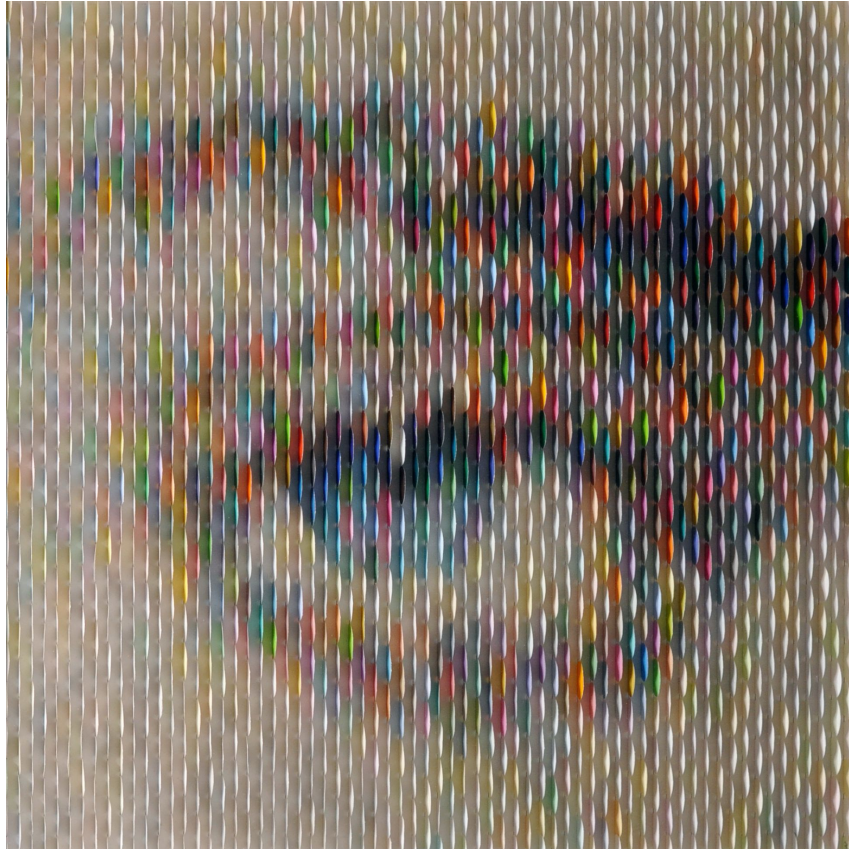
*C Evans 90°*

*18" x 18"*

*Mixed media 2019*

*\$4,500*

[carlos@carlos-antonio.com](mailto:carlos@carlos-antonio.com)



*CHA CHA (r) 90°*

*18" x 18"*

*Mixed media 2019*

*\$4,500*

[carlos@carlos-antonio.com](mailto:carlos@carlos-antonio.com)





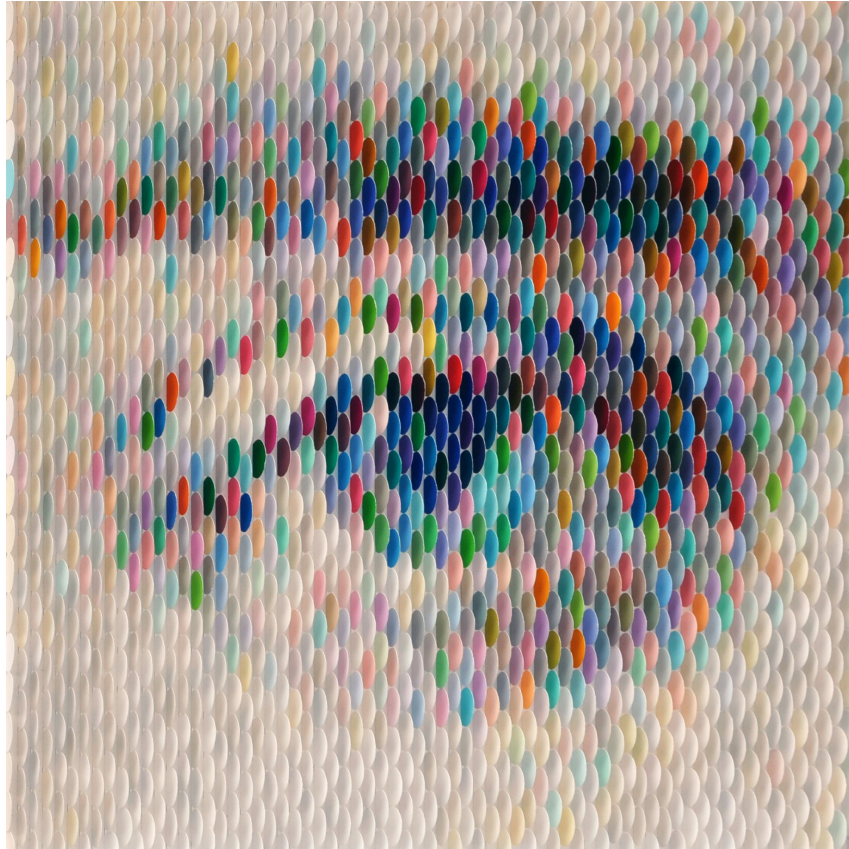
*CHA CHA (r)*

*18" x 18"*

*Mixed media 2019*

*\$4,500*

[carlos@carlos-antonio.com](mailto:carlos@carlos-antonio.com)



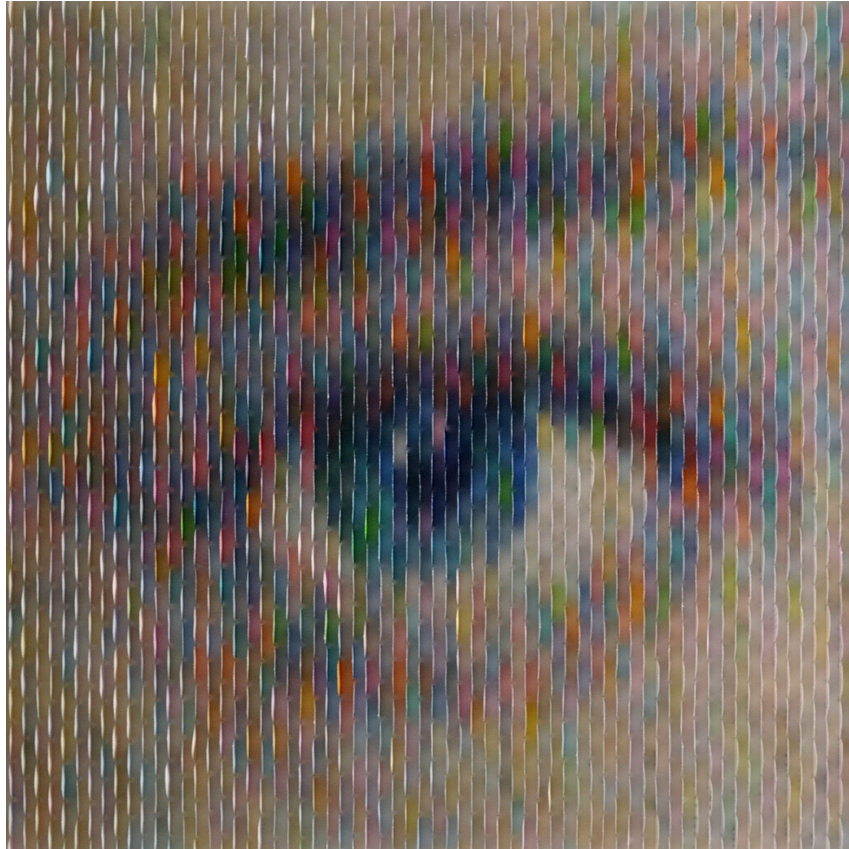
*Aug Martin (rev) 90°*

18" x 18"

Mixed media 2019

\$4,500

[carlos@carlos-antonio.com](mailto:carlos@carlos-antonio.com)



*9053 Eye 90°*

18" x 18"

Mixed media 2019

\$4,500

[carlos@carlos-antonio.com](mailto:carlos@carlos-antonio.com)



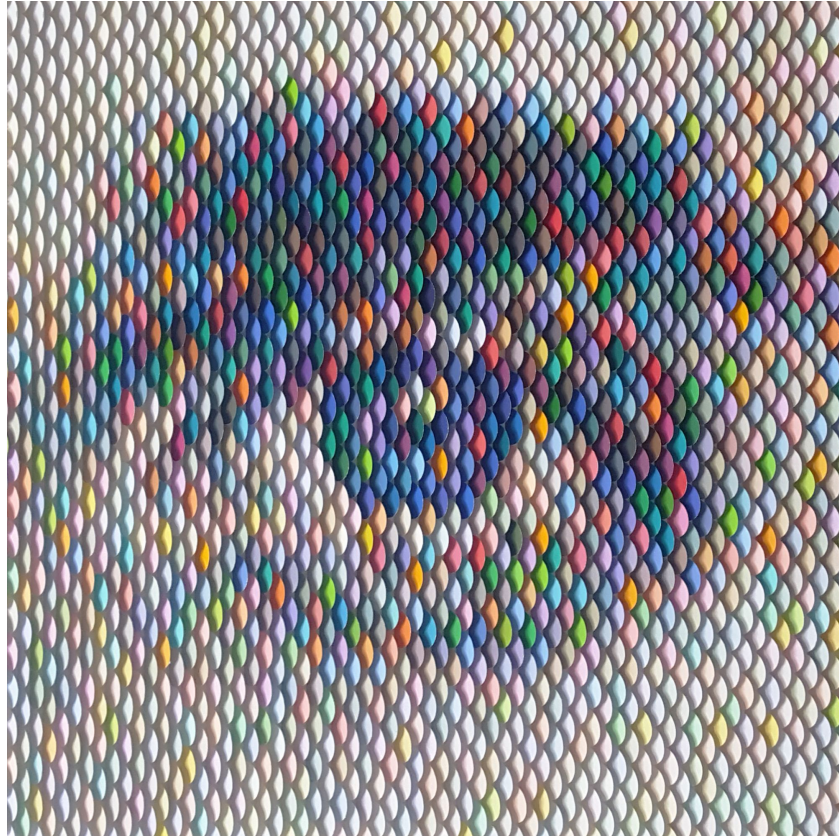
*DILF*

*48" x 48"*

*Mixed media 2016 - 2022*

*\$21,500*

[carlos@carlos-antonio.com](mailto:carlos@carlos-antonio.com)

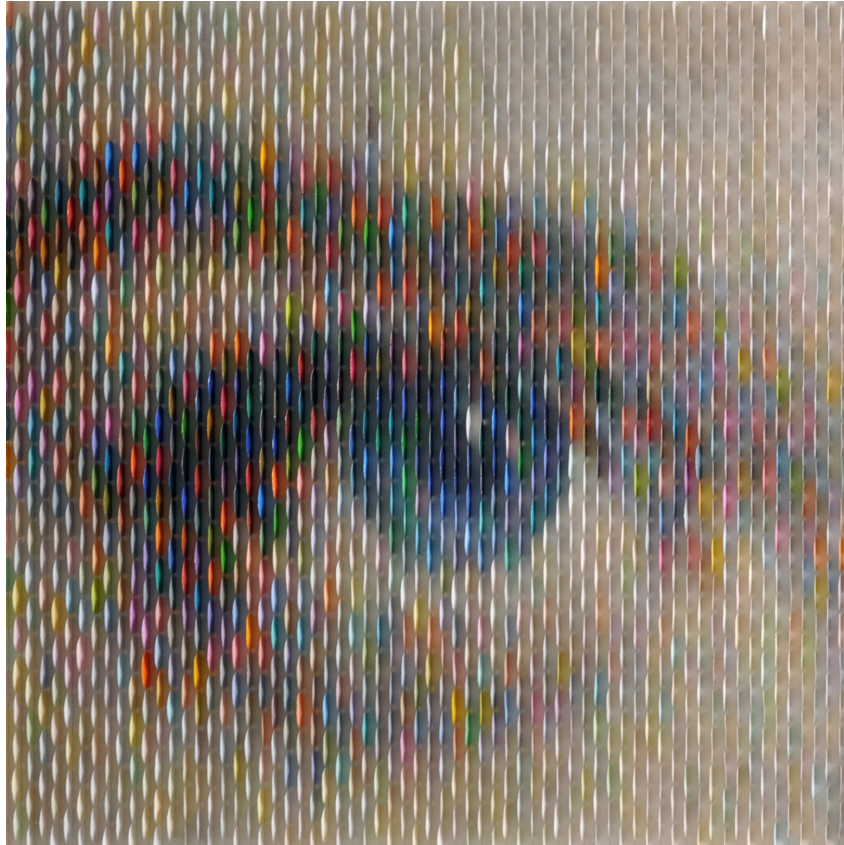


*Rumble Eye II*

18" x 18"  
Mixed media 2019

\$4,500

[carlos@carlos-antonio.com](mailto:carlos@carlos-antonio.com)



*SF Eye 90°*

*18" x 18"*

*Mixed media 2019*

*\$4,500*

[carlos@carlos-antonio.com](mailto:carlos@carlos-antonio.com)